



CEWELD DUR 12 Tig

TYPE Cobalt-based thermo shock resistant alloy for overlay applications.

ANWENDUNGEN Steam-valves, high temperature liquid pumps, hot cutting tools, cutting tools for plastic, wood and paper as well as high stressed sealings and sliding surfaces.

EIGENSCHAFTEN Outstanding alloy against abrasion, thermo-shock and corrosion combined with high temperatures. The weld deposit can be machined with tungsten tool tips and by grinding. The hardness of the weld deposit will degrees 20% at 600°C and has a nominal hardness of 49-53 HRc at room temperature. The weld deposit is high heat resistant up to 900°C. DUR 12 offers a low coefficient of friction of and exceptional resistance to galling. It has cavitation-erosion resistance ten times that of 304 stainless steel, DUR12 can be used to protect bearing surfaces in non-lubricating conditions due to its resistance to metal-to-metal wear.

KLASSIFIKATION

AWS	A 5.21: ERCoCr-B
EN ISO	14700: S Co3
F-nr	71

GEEIGNET FÜR Stellite 12 alloy for hardfacing steam-valves, high temperature liquid pumps, hot cutting tools, cutting, tools for plastic, wood and paper as well as high stressed sealings and, sliding surfaces.

ZULASSUNGEN

SCHWEISSPOSITIONEN



**TYPISCHE CHEMISCHE
ANALYSE DES
FÜLLMETALLS (%)**

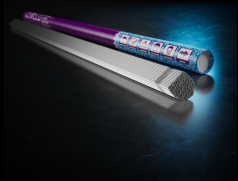
C	Si	Mn	Cr	Fe	W	Co
1.4	0.8	0.1	29	2.5	8	Rem.

MECHANISCHE GÜTEWERTE

Heat Treatment	R _{P0.2} (MPa)	R _m (MPa)	A ₅ (%)	Hardness
As Welded				48 HRc

RÜCKTROCKNUNG Not required

GAS ACC. EN ISO 14175 I1



CEWELD DUR 12 Tig

DUR 12 TIG 2,4 X 1000MM	Packaging	KG/unit	EanCode
	Tube	5	8720663402370
DUR 12 TIG 3,2 X 1000MM	Packaging	KG/unit	EanCode
	Tube	5	8720663402387
DUR 12 TIG 4,0 X 1000MM	Packaging	KG/unit	EanCode
	Tube	5	8720663402394
DUR 12 TIG 5,0 X 1000MM	Packaging	KG/unit	EanCode
	Tube	5	8720663402400
DUR 12 TIG 6,4 X 1000MM	Packaging	KG/unit	EanCode
	Tube	5	8720663402417